

Pearl River County, MS Family Resource Directory



SOUTHERN PEARL RIVER COUNTY
(SPRC) COMMUNITY COALITION

The SPRC EXCEL BY 5 COALITION is made up of members from communities in Pearl River County, MS. This coalition includes parents, grandparents, health care providers, early educators, business leaders, and civic leaders, as well as representatives from school districts, government agencies, and faith-based groups.

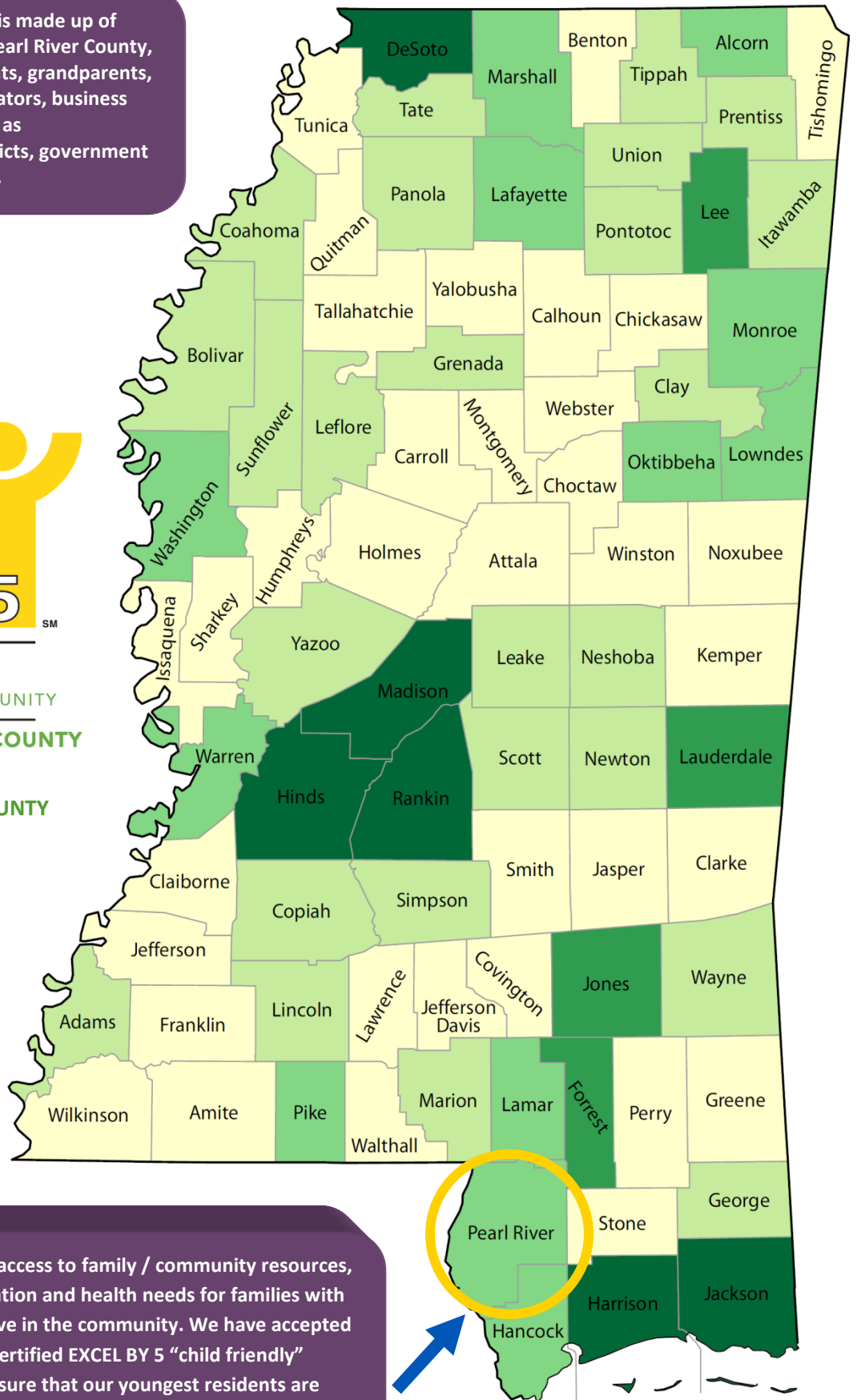


CERTIFIED
EARLY CHILDHOOD COMMUNITY

SOUTHERN PEARL RIVER COUNTY

WWW.EXCELBY5.COM

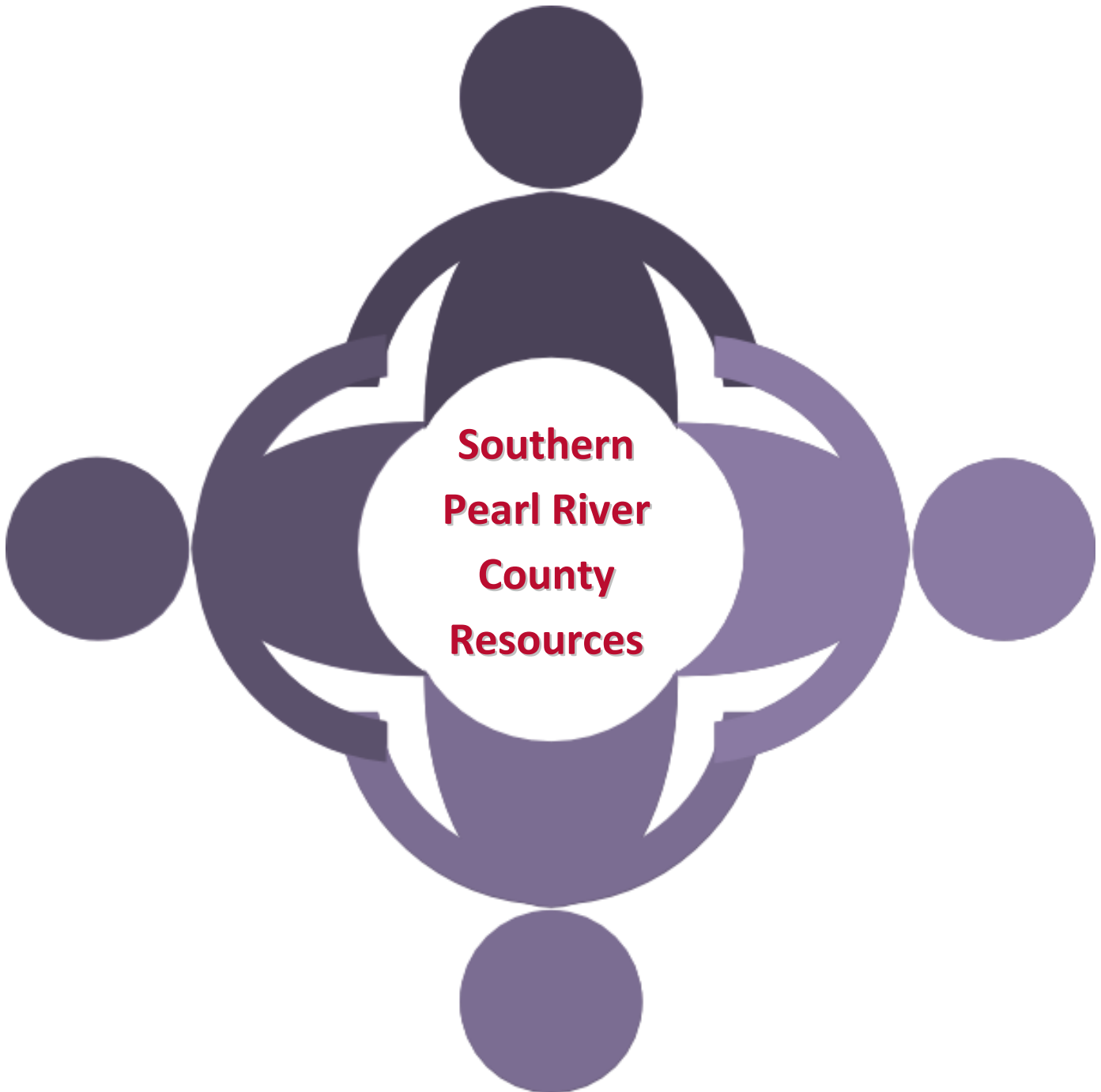
[/SOUTHERN-PEARL-RIVER-COUNTY](https://www.facebook.com/SOUTHERN-PEARL-RIVER-COUNTY)



Our main goal is to provide access to family / community resources, as well as identify the education and health needs for families with children from birth to age five in the community. We have accepted the challenge to become a certified EXCEL BY 5 "child friendly" community. We strive to ensure that our youngest residents are safe, healthy, and ready to learn!

ABOUT USING THIS GUIDE

Our intention with this resource guides is to increase public access to resources available to families with young children within Southern Pearl River County communities. Most of our listings are for locations in the Picayune, Carriere, and Poplarville, MS areas. Our volunteers will check the information for all of the listed services for accuracy annually. If you have a question about costs, services or eligibility, please call ahead.



RESOURCE INDEX

24-HOUR EMERGENCY & HOTLINE NUMBERS.....	5
IMPORTANT PHONE NUMBERS & INFORMATION.....	6
EMERGENCY RADIO STATIONS.....	9
STATE SERVICE CENTERS.....	9

PEARL RIVER COUNTY SERVICE AGENCIES

ABUSE/NEGLECT	11
COLLEGES/UNIVERSITIES	11
EARLY INTERVENTION SERVICES / DISABILITIES.....	12
EDUCATION: EARLY CHILDHOOD / CHILDCARE (LICENSED)	13
EDUCATION: PRIMARY / SECONDARY - PUBLIC.....	15
EDUCATION: PRIMARY / SECONDARY - PRIVATE	19
EMPLOYMENT SERVICES	19
LIBRARIES	20
FAMILY SUPPORT SERVICES: LOCAL AGENCIES	20
FAMILY SUPPORT SERVICES: REGIONAL AGENCIES	22
FINANCIAL SERVICES.....	23
FINANCIAL TRAINING	24
MEDICAL: HOSPITALS	25
MEDICAL: PEDIATRIC / FAMILY CLINICS	26
MEDICAL: PEDIATRIC / FAMILY DENTISTRY.....	28
MEDICAL: VISION SERVICES	29
RECREATIONAL ACTIVITIES	32
YOUTH SUPPORT PROGRAMS	35

24-HOUR EMERGENCY & HOTLINE NUMBERS

Emergencies: Fire/Rescue & Police: 911

There are three main emergency service functions:

- Police - providing community safety and acting to reduce crime against persons and property
- Fire department (fire and rescue service) - providing firefighters to deal with fire and rescue operations, and may also deal with some secondary emergency service duties
- Emergency medical services (EMS) - providing ambulances and staff to deal with medical emergencies

Abused Persons Crisis Line (Child & Adult): 1-800-222-8000

To report exploitation, abuse or neglect of a CHILD, senior, or vulnerable adult.

<http://www.mdhs.state.ms.us/>

Alcoholics Anonymous (South Mississippi) 24-Hour Help Line: 1-228-575-9225

www.aagulfcoast.org

A fellowship of men and women who share their experience, strength and hope with each other that they may solve their common problem and help others to recover from alcoholism. The only requirement for membership is a desire to stop drinking. There are no dues or fees for AA membership; we are self-supporting, through our own contributions. AA is not allied with any sect, denomination, politics, organization or institution; does not wish to engage in any controversy; neither endorses nor opposes any causes. Our primary purpose is to stay sober and help other alcoholics to achieve sobriety.

Breastfeeding Information Line: 1-800-545-6747

This helpline provides information, education, and support for women who want to breastfeed http://msdh.ms.gov/msdhsite/_static/41,0,144.html

Children's Medical Program: 1-800-844-0898

If your child has a chronic illness or disability, we may be able to help. CMP will work with you and your health providers to arrange and organize services, as well as, identify needs and resources to improve the health and well-being of your child. Please contact us for information to determine how we may assist your child and family.

http://msdh.ms.gov/msdhsite/_static/41,0,163.html

Early Intervention Systems: 1-800-451-3903

If you have a child that is under three years old, First Steps may provide developmental services and other resources to help your child meet his or her maximum potential. Services provided include (but are not limited to): screenings, evaluations and assessments,

<p>Individualized Family Service Plans (IFSPs), Early Intervention services, and transition plans to preschool services under Part B of IDEA, or other programs.</p> <p>http://www.msdh.state.ms.us/msdhsite/index.cfm/41,0,74,html</p>
<p>Immunizations for Children: (601) 576-7751</p> <p>Immunizations against childhood diseases are required by Mississippi law in order to enter school, Head Start, or day care. Specific vaccinations are also recommended for students entering high school or college. The Mississippi State Department of Health provides all necessary immunizations at low cost. Immunizations are free if you qualify for the Vaccines for Children program.</p> <p>http://www.msdh.state.ms.us/msdhsite/_static/14,0,71.html</p>
<p>Women's Health: 1-800-721-7222</p> <p>We offer family planning and reproductive health services at over 100 local health departments and county clinics. We provide a wide range of confidential and professional reproductive health services to both men and women, regardless of income. You may be eligible for free or reduced cost services based on a sliding fee scale.</p> <p>http://msdh.ms.gov/msdhsite/_static/41,0,107.html</p>
<p>Women, Infants and Children (WIC): 1- (800) 545-6747</p> <p>WIC is a special supplemental food program for pregnant, breastfeeding, and post-partum women, infants and children under five years of age. WIC helps you and your baby get healthy foods and healthy advice in the first years of life.</p> <p>http://msdh.ms.gov/msdhsite/_static/41,0,128.html</p>

IMPORTANT PHONE NUMBERS & INFORMATION

Pearl River County General Information		
Millard: 601-403-2500	Picayune: 601-749-7700	Poplarville: 601-403-2300
UTILITIES		
<p>City of Picayune Water & Natural Gas 203 Goodyear Blvd, Picayune, MS 39466 (601) 798-9776 http://www.picayune.ms.us/departments/utility</p>	<p>Pearl River Central Water Assn P. O. Box 419, McNeil, MS 39457 (601) 798-3103 or (601) 798-3103</p>	
<p>Pearl River County Utility Authority 100 Street A, Suite F, Picayune, MS 39466 (601) 799-5259 www.prc-ua.org</p>	<p>Sunny Oaks Water Assn. P.O. Box 112, Poplarville, MS 39470 (601) 795-3170</p>	

Bi-County Water Association Inc.

Route 4 Box 381, Poplarville, MS 39470
(601) 795-4565

Carnes Utility Association Inc.

1084 Carnes Road, Wiggins, MS 39577
(601) 928-5918

Center Water Association Inc.

1050 Bouie Road, Carriere, MS 39426
(601) 799-8384 or (601) 798-1401

Hide-A-Way Lake Club Inc.

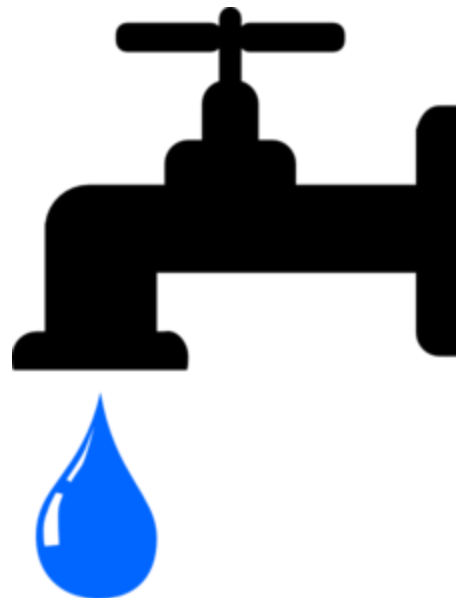
P. O. Box 1011, Picayune, MS 39466
(601) 798-1484

Nicholson Water & Sewer Assn

P.O. Box 309, Nicholson, MS 39463
(601)798-9696

North Lumberton Utility Assn. Inc.

410 North Front Street, Lumberton, MS 39455
(601) 796-4941



FIRE NON-EMERGENCY

Picayune Fire Department
435 S Loftin St, Picayune, MS 39466
(601) 799-0614

Picayune Fire Chief's Office
435 S Loftin St, Picayune, MS 39466
(601) 798-6513

Picayune Fire Department
1700 Palestine Rd, Picayune, MS 39466
(601) 798-4811

Poplarville Fire Department
1390 S Main St, Poplarville, MS 39470
(601) 795-4313

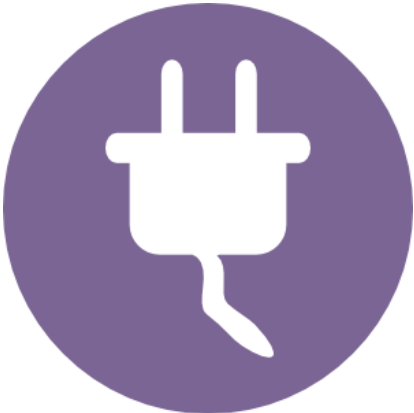
Picayune Fire Department
2233 Adcox Rd, Picayune, MS 39466
(601) 798-7862

Lumberton Fire Department
702 9th Ave, Lumberton, MS 39455
(601) 796-8901

McNeill Volunteer Fire Department
106 Library St, Picayune, MS 39466
(601) 798-7065

Poplarville Fire Department
110 S Main St, Poplarville, MS 39470
(601) 795-2200

<p>Henleyfield Volunteer Fire Department 5585 MS-43, Carriere, MS 39426 (601) 799-5887</p>	<p>Carriere Volunteer Fire Department 7414 US-11, Carriere, MS 39426 (601) 799-2345</p>
<p>POLICE NON-EMERGENCY</p> <p>Pearl River County Sheriff Office 200 Julia Street, Poplarville, MS 39470 (P) 601-795-2241 or 601-798-5528</p> <p>Picayune Police Department 328 South Main Street, Picayune, Mississippi, 39466 (P) 601-798-7411; (F) 601-798-7412</p> <p>Poplarville Police Department 305 Highway 26, Poplarville, Mississippi, 39470 (P) 601-795-4447; (F) 601-795-2884</p>	
<p>TELEPHONE SERVICES: LAND LINES</p> <p>AT&T 231 Frontage Road, Picayune, MS 39466 (601) 799-3905 www.att.com</p>	<p>GAS / ELECTRIC COMPANIES</p> <p>Coast Electric 6375 US 11. Picayune, MS 39466 Customer Care: 601-798-5013 Report an outage: 1-877-769-2372 www.coastepa.com</p>



EMERGENCY RADIO STATIONS

<p>WRJW (1320AM) WRJW is a 5000 watt facility with a history of service to our market, Pearl River County,</p>
--

Hancock County, and several Louisiana Parishes. The WRJW tower is strategically located to provide an optimum signal that stretches from New Orleans to the Mississippi Gulf Coast, while reaching South Central Mississippi along with St. Tammany and Washington Parishes.

STATE OF MISSISSIPPI SERVICE CENTERS

Child Support Enforcement, Human Services

5 Willow Bend Drive, Hattiesburg, MS 39402

Phone: 877-882-4916

<http://www.mdhs.ms.gov/child-support/>

The mission of the Division of Child Support Enforcement is to provide child support services to ensure that children receive financial and emotional support from both parents and empower families to become self-sufficient. The Division of Child Support Enforcement (DCSE) offers services to Mississippi's children and families by securing financial and medical support. Every child deserves the love and support of both parents to develop into the most productive adult possible. DCSE operates 84 offices in 82 counties to ensure the availability of child support services to all eligible persons in the State of Mississippi.

Economic Assistance

153 Savannah Millard Rd, Suite C, Poplarville Ms 39470

Phone: 601-403-2424

Fax: 601-403-2469

<http://www.mdhs.ms.gov/economic-assistance>

The mission of the Division of Economic Assistance is to promote self-sufficiency and personal responsibility for all Mississippians.

Emergency Medical Services for Children

570 East Woodrow Wilson Drive, Jackson, MS 39216

Phone: 601-576-7400

http://msdh.ms.gov/msdhsite/_static/48.html

The mission of the Mississippi Emergency Medical Services for Children Program is to prevent and reduce childhood, adolescent, and youth death and disability resulting from illness and injury.

Mississippi Council on Developmental Disabilities

239 North Lamar St. 1101 Robert E. Lee Building, Jackson, MS 39201

Phone: 601-359-6238

<http://www.msccd.org/>

The CDD is an appointed group of people designed to support individuals with developmental disabilities, their families and the community they live

Mississippi Department of Employment Security

Picayune WIN Job Center
2005 Wildwood Rd, Picayune, MS 39466
Phone: 601-798-3472

<http://mdes.ms.gov/>

Provides help for businesses and job seekers through a variety of employment, training and business services.

Mississippi Department of Mental Health

1101 Robert E. Lee Bldg. 239 North Lamar Street, Jackson, MS 39201
Phone: 1-877-210-8513

<http://www.dmh.state.ms.us/>

Supporting a better tomorrow by making a difference in the lives of Mississippians with mental illness, substance abuse problems and intellectual/developmental disabilities one person at a time.

Mississippi Department of Public Safety

Department Of Motor Vehicles - Driver License
917 Goodyear Boulevard, Picayune, MS 39466
Phone: (601) 799-1428

<http://www.dps.state.ms.us/driver-services/new-drivers-license/district-one-locations/>

Drivers license issuance, renewals, IDs, written tests, and road tests.



PEARL RIVER COUNTY, MS RESOURCES (A-Z)

ABUSE / NEGLECT

Pearl River County Department of Human Services

417 Hwy 11 N., Poplarville, MS 38470

Phone: (601) 795-3038; Fax: (601) 964-2331

Services: Mental Health/Drugs and Alcohol; Human Services; Health and Medical Services; Senior Citizen Services; Employment Assistance and Opportunities; Placement Resources; Pregnancy and Parenting; Housing; Child Care; Educational Services; Children's Programs; Support Service; Courts and Law Enforcement



Report Abuse

Report abuse, neglect and exploitation in Mississippi

Mississippi Centralized Intake

1-800-222-8000 ; (601) 432-4570

www.msabusehotline.mdhs.ms.gov

COLLEGES / UNIVERSITIES (within 25 miles)

PEARL RIVER COMMUNITY COLLEGE (PRCC)

Poplarville Campus

101 Highway 11 North, Poplarville, Mississippi 39470

Phone: (601) 403-1000

Website: www.prcc.edu

Provides onsite and online classes in general education and career/technical education leading to Associate Degrees or Certificates of Proficiency in a variety of areas.



DELTA COLLEGE OF ARTS & TECHNOLOGY

105 Gause Blvd W, Slidell, LA 70460

Phone: (985) 643-7730

Website: www.deltacollege.com

Offers training for Dental Assistant, Medical Assistant, Medical Office Assistant, & Practical Nursing.



EARLY INTERVENTION SERVICES / DISABILITIES

Early Intervention Program (First Steps) - Mississippi State Department of Health

7547 Highway 11 North, Carriere, MS 39426

Phone: 601-798-6212

Website: http://msdh.ms.gov/msdhsite/_static/41,0,74.html

Early Interventionist – Ann Brock, MS; ann.brock@msdh.state.ms.us

If you have a child that is under three years old, First Steps may provide developmental services and other resources to help your child meet his or her maximum potential. Services provided include (but are not limited to): screenings, evaluations and assessments, Individualized Family Service Plans (IFSPs), Early Intervention services, and transition plans to preschool services under Part B of IDEA, or other programs.

Mississippi Department of Education – Office of Special Education

Parent Hotline: 601-359-3498

Website: <http://www.mde.k12.ms.us/OSE>

The Office of Special Education is a service-oriented organization that seeks to improve the education experience for children with disabilities. We strive to nurture a dedicated staff through intense professional development opportunities, field experience, and individual accountability. In keeping with the Individuals with Disabilities Education Act and state law, we help local schools and districts provide effective educational programs to students with disabilities, ages 3-20, who need special education and related services.

Pearl River County School District - Department of Student Services

7391 Highway 11, Carriere, MS 39426

Phone: (601) 798-1912; Fax: (601) 799-5165

Director: Mike Posey: mposey@prc.k12.ms.us

Ages 3+: Supervises the identification of students for Special Education, Intellectually Gifted, and Section 504 services. The department strives to meet the individual needs of students found eligible through appropriate programming and the provision of related services.

Picayune School District - Office of Exceptional Education

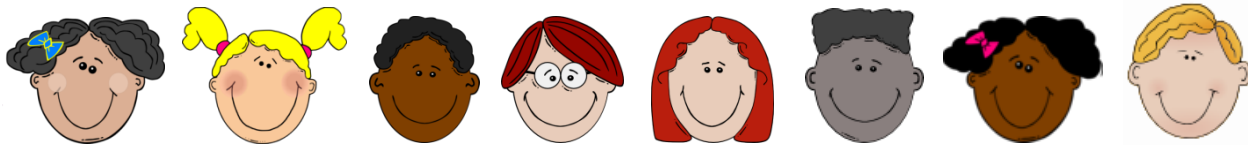
622 Goodyear Blvd., Picayune, MS 39466

Phone: (601) 798-4555 | Fax: (601)798-1346

Director: Diane Wise: dwise@pcu.k12.ms.us

Ages 3+: Offers a wide range of programs to meet the individual needs of students with special needs through appropriate student identification procedures, achievement testing, and innovative instructional strategies.

EDUCATION: EARLY CHILDHOOD / CHILDCARE (LICENSED)



1ST BAPTIST CARRIERE PRE-SCHOOL

7264 Highway 11, Carriere, MS 39426

Phone: (601) 798-6301

Maximum Capacity: 30

ANNIE'S KINDERGARTEN AND DAY CARE

716 Davis Street, Picayune, MS 39466

Phone: (601) 798-3446

Maximum Capacity: 59

CHILD DEVELOPMENT LAB SCHOOL

101 Highway 11 North, Poplarville, MS 39470

Phone: (601) 403-1256

Maximum Capacity: 50

FIRST BAPTIST CHURCH

401 Goodyear Boulevard, Picayune, MS 39466

Phone: (601) 916-9330

Maximum Capacity: 150

FIRST BAPTIST PLAYSCHOOL

203 South Main Street, Poplarville, MS 39470

Phone: (601) 795-4531

Maximum Capacity: 63

HANCOCK COUNTY STARS-WEST

23350 Highway 43, Picayune, MS 39466

Phone: (228) 467-8050

Maximum Capacity: 100

KIDS CLUBHOUSE

1401 Sixth Ave, Picayune, MS 39466

KREATIVE KINGDOM CHRISTIAN LRING CTR

330 Jacob's Road, Poplarville, MS 39470

Phone: (601) 403-8489

Maximum Capacity: 95

LEANNE'S LEARNING CENTER

1618 Beech Street, Picayune, MS 39466

Phone: (601) 374-9604

Maximum Capacity: 48

LINDA'S FAMILY CHILD CARE

1305 Ausborn Rd, Picayune, MS 39466

Phone: (601) 798-0643

Maximum Capacity: 17

MCCARTY LEARNING CENTER

401/403 Rosa Street, Picayune, MS 39466

Phone: (601) 799-2716

Maximum Capacity: 125

PICAYUNE HEAD START COMPLEX

1220 Hwy 11 South, Picayune, MS 39466

Phone: (601) 799-1716

Maximum Capacity: 201

PICAYUNE SD EARLY HEAD START

1620 Rosa Street, Picayune, MS 39466

Phone: (601) 799-4702

Maximum Capacity: 90

PICAYUNE SD EARLY HEAD START

1865 Highway 11 South, Picayune, MS 39466

Phone: (601) 798-7808

Phone: (601) 798-0917
Maximum Capacity: 107

KIDS CLUBHOUSE, LLC

705 West Canal Street, Picayune, MS 39466
Phone: (601) 798-0917
Maximum Capacity: 64

KIDS KINGDOM

10 Alex Place, Picayune, MS 39466
Phone: (601) 798-5437
Maximum Capacity: 95

KIDS KORNER LEARNING CTR OF PICAYUNE

611 East Canal Street, Picayune, MS 39466
Phone: (601) 798-0174
Maximum Capacity: 150

KIDS' KAMPUS POPLARVILLE

202 S Strahan Street, Poplarville, MS 39470
Phone: (601) 795-4853
Maximum Capacity: 80

Maximum Capacity: 90

POPLARVILLE HEAD START

205 East Locke Street, Poplarville, MS 39470
Phone: (601) 795-8011
Maximum Capacity: 65

RENEE'S AFTERSCHOOL

21 Ozona Rd, Carriere, MS 39426
Phone: (601) 273-2437
Maximum Capacity: 22

St. Charles Catholic School

1006 Goodyear Blvd, Picayune, MS 39466
Phone: (601) 799-0860
Maximum Capacity: 8

THE PLAID APPLE PRESCHOOL

244 Burgetown Rd, Carriere, MS 39426
Phone: (601) 916-3693
Maximum Capacity: 48

UNION BAPTIST KINDERGARTEN

1628 West Union Road, Picayune, MS 39466
Phone: (601) 798-8999
Maximum Capacity: 50



EDUCATION: PRIMARY / SECONDARY- PUBLIC

Lumberton Public School District

107 West Tenth Avenue, Lumberton, MS 39455

Phone: (601) 796-2441; Fax: (601) 796-2051

Superintendent: Linda L. Smith, Ph.D.

<https://ls.lamarcountyschools.org/>

LUMBERTON ELEMENTARY SCHOOL

7922 U.S. Highway 11

Lumberton, MS 39455

Phone: (601) 796-3721

Fax: (601) 796-7903

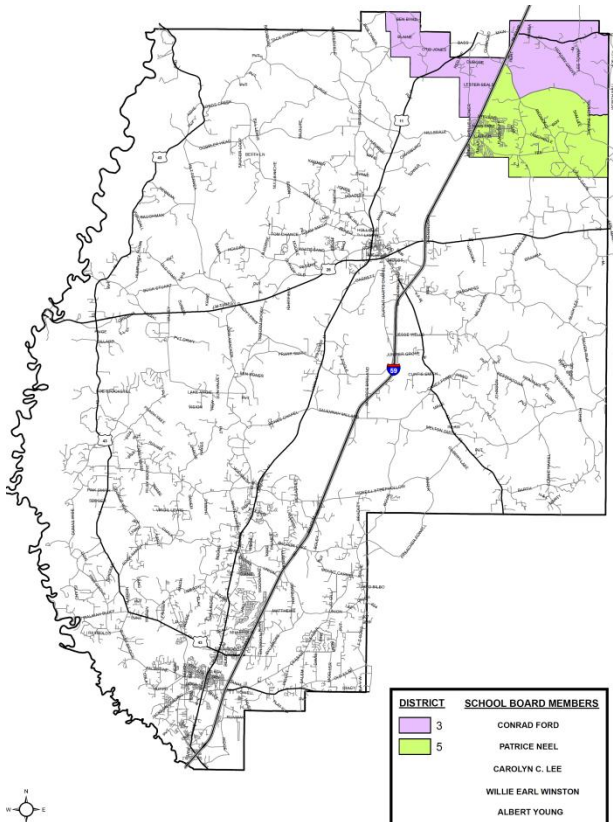
LUMBERTON HIGH SCHOOL

7920 U.S. Highway 11

Lumberton, MS 39455

Phone: (601) 796-2451

Fax: (601) 796-7907



PEARL RIVER COUNTY SCHOOL DISTRICT

7441 Highway 11, Carriere, MS 39426
Phone: (601) 798-7744; Fax: (601) 798-3527
Superintendent: Mr. Alan Lumpkin
<http://www.prc.k12.ms.us/>

CENTER FOR ALTERNATIVE EDUCATION

461 Burgetown Rd., Carriere, MS 39426
Phone: (601) 798-6852
Fax: (601) 229-0612

PEARL RIVER CENTRAL HIGH SCHOOL

7407 HIGHWAY 11, Carriere, MS 39426
Phone: (601) 798-1986
Fax: (601) 799-0068

PEARL RIVER CENTRAL JUNIOR HIGH

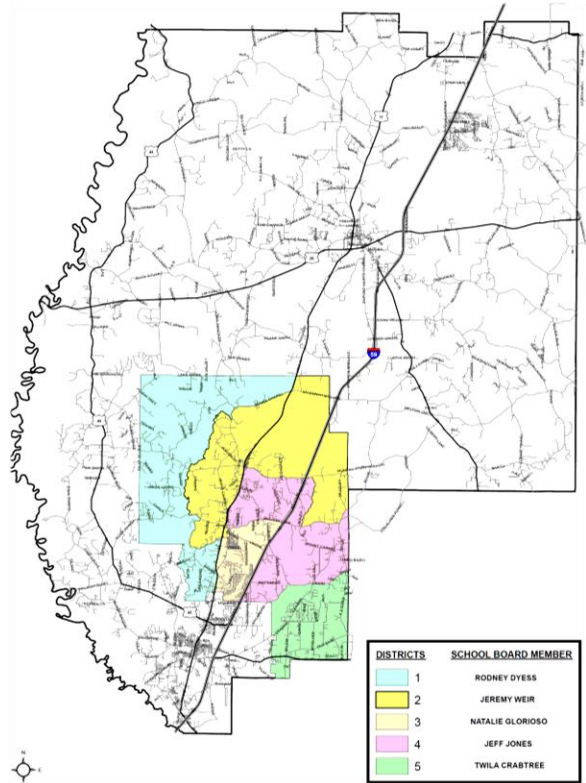
7391 HWY 11, Carriere, MS 39426
Phone: (601) 798-5654
Fax: (601) 798-2822

PEARL RIVER CENTRAL LOWER ELEMENTARY

116 ALPHABET AVE., Carriere, MS 39426
Phone: (601) 799-4519
Fax: (601) 588-2067

PEARL RIVER CENTRAL UPPER ELEMENTARY

1592 HENLEYFIELD MCNEILL ROAD, Carriere, MS 39426
Phone: (601) 798-2864
Fax: (601) 799-0356



PICAYUNE SCHOOL DISTRICT

706 Goodyear Blvd., Picayune, MS 39466
Phone: (601) 798-3230; Fax: (601) 798-1742

Superintendent: Mr. Dean Shaw

<https://www.picayuneschools.org/>

Center for Alternative Education

900 East Third Street, Picayune, MS 39466

Phone: (601) 799-0684

Fax: (601) 799-0325

Nicholson Elementary School

1887 Hwy 11 South, Picayune, MS 39466

Phone: (601) 798-6309

Fax: (601) 798-1558

Picayune Junior High School

702 Goodyear Blvd., Picayune, MS 39466

Phone: (601) 798-5449

Fax: (601) 749-5902

Picayune Memorial High School

800 Fifth Avenue, Picayune, MS 39466

Phone: (601) 798-1380

Fax: (601) 799-4705

PMHS Career & Technology Center

600 Goodyear Blvd., Picayune, MS 39466

Phone: (601) 798-7601

Fax: (601) 799-4711

Roseland Park Elementary School

1610 Gilcrease Street, Picayune, MS 39466

Phone: (601) 798-6824

Fax: (601) 798-1894

South Side Upper Elementary School

1500 Rosa Street, Picayune, MS 39466

Phone: (601) 798-1105

Fax: (601) 798-6032

South Side Lower Elementary School

400 South Beech Street, Picayune, MS 39466

Phone: (601) 799-0683

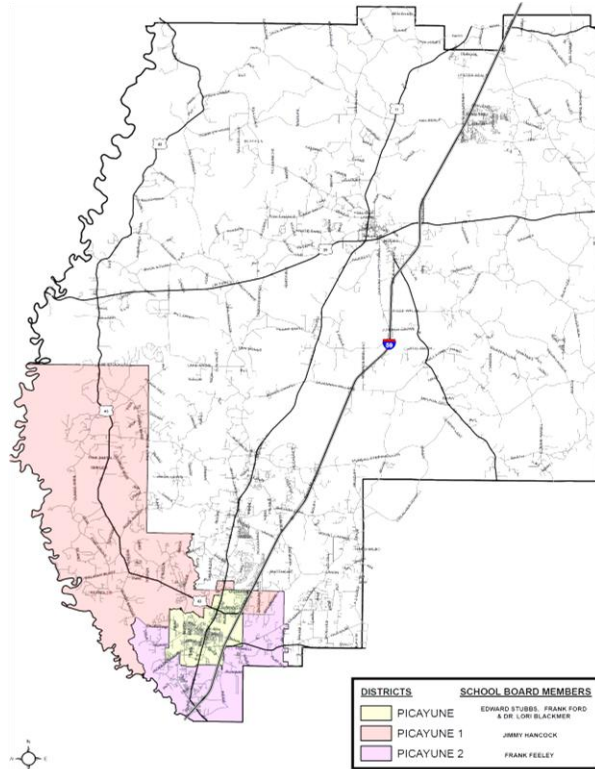
Fax: (601) 798-6371

West Side Elementary School

111 Kirkwood Street, Picayune, MS 39466

Phone: (601) 798-3625

Fax: (601) 798-1879



POPLARVILLE SCHOOL DISTRICT

302 South Julia Street, Poplarville, MS 39470

Phone: (601) 795-8477; Fax: (601) 795-0712

Superintendent: Mr. Carl Merritt

<http://www.poplarvilleschools.org/>

MIDDLE SCHOOL OF POPLARVILLE

6 Spirit Street, Poplarville, MS 39470

Phone: (601) 795-1350

Fax: (601) 795-1351

POPLARVILLE CAREER DEVELOPMENT CTR

9 Career Center Circle, Poplarville, MS 39470

Phone: (601) 795-8343

Fax: (601) 795-1353

POPLARVILLE JR SR HIGH SCHOOL

1 Hornet Drive, Poplarville, MS 39470

Phone: (601) 795-8424

Fax: (601) 795-1345

POPLARVILLE LOWER ELEMENTARY SCHOOL

804 South Julia Street Suite A, Poplarville, MS 39470

Phone: (601) 795-4736

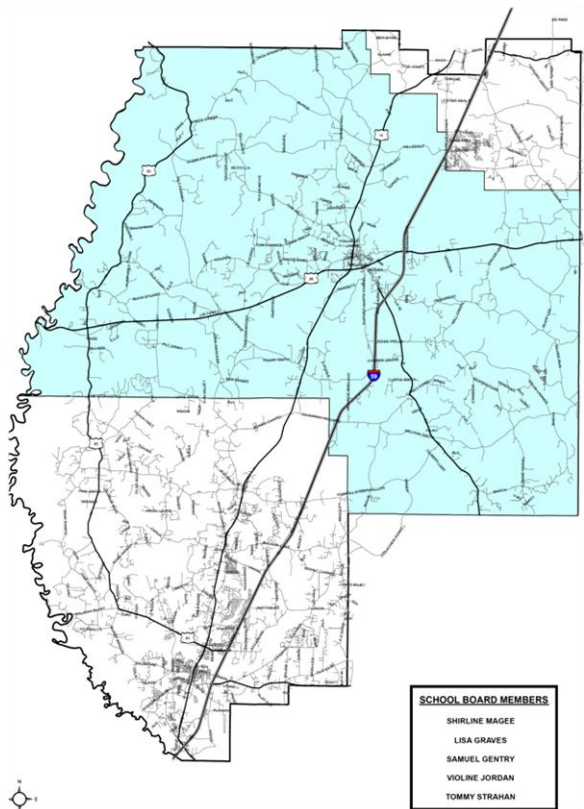
Fax: (601) 795-6568

POPLARVILLE UPPER ELEMENTARY SCHOOL

1 TODD CIRCLE, Poplarville, MS 39470

Phone: (601) 795-8303

Fax: (601) 795-3104



EDUCATION: PRIMARY / SECONDARY- PRIVATE

Heritage Christian Academy

21 Richard Rd, Picayune, MS 39466

Phone: (601)215-6327

Email: info@HCApicayune.com

Website: <http://hcapicayune.com/>

Grades: K - 3

Roseland Park Baptist Church Baptist Church Academy

Address: 2130 Hwy 11 N, Picayune, MS 39466

Phone: (601) 798-5620

Website: <http://roselandparkbaptist.org/>

Grades: PreK - 7

St. Charles Borromeo Catholic School

Address: 1006 Goodyear Blvd, Picayune, MS 39466

Phone: (601) 799-0860

Website: <http://www.stcbcatholicsschool.org/>

Grades: PreK – 8

Union Baptist Church Academy

Address: 1628 W Union Rd, Picayune, MS 39466

Phone: (601) 798-6470

Website: <https://www.ubcnet.org/>

Grades: PreK - 12



EMPLOYMENT SERVICES

Picayune WIN Job Center

Mississippi Department of Employment Security

2005 Wildwood Rd, Picayune, MS 39466

Phone: (601) 798-3472

Website: <http://mdes.ms.gov/win-job-centers/picayune-win-job-center/>



Services for Individuals: Job Placement, WIOA Services, Priority Services for Veterans, TAA, Job Corps, Referral to Supportive and Rehabilitation Services, Training

Resources for Individuals: Computers with Internet access; Fax; Copier; Resume Preparation software; Career Planning & Assessment; Access to Training information; Resource Center

LIBRARIES

PEARL RIVER COUNTY LIBRARY SYSTEM

Margaret Reed Crosby Memorial Library

900 Goodyear Blvd., Picayune, MS 39466

Phone: (601) 798 5081

Website: <http://pearlriver.lib.ms.us/>

Poplarville Public Library

202 West Beers Street, Poplarville, MS 39470

Phone: (601) 795 8411

Services include: Art & Antiques Collections; Meeting Room & Kitchen; Audio Books; Memorial Books & Gifts; Book Clubs; Microfilms & Microfilm Reader/Printer; Blind & Physically Handicapped Library Services; Mississippi Code; Career Center / Employment; Movies on DVD; Copy Machine; Newspapers; Exhibits (Art & Antiques); Outreach Programs & Materials; Friends of the Library; Preschools, Schools & Senior Center; Interlibrary Loan; Photographs; Internet Access; Proctor Exams for Distance Learning; Large Print Collection; Programs for Adults, Teens & Children; Learning Express Library; Public Computers; Library Cards; Public Typewriters; Local History Room with Mississippi & Genealogy Collections; Reference Help; Magazines – Adult, Teen, & Children; Service to Shut-ins; MAGNOLIA Databases; Stories to Go; Wireless Internet

FAMILY SUPPORT SERVICES : LOCAL AGENCIES

Brother's Keeper Ministries

310 E Smith St, Poplarville, MS 39470

Phone: (601) 795-3173

Email: brotherskeeper01@att.net

A non-profit multi-denominational Christian organization dedicated to meeting the needs of those in all of Pearl River County by networking with local churches, government agencies and other volunteer groups to provide food, counseling, spiritual guidance and mentoring. Food Pantry-Assistance is given to households in need who qualify under USDA guidelines. On-going assistance is given to those whose circumstances do not change. We receive food from Wal-Mart #970 in Picayune each week. We also receive food donations from local schools, churches, organizations, businesses and individuals.



Christian Care Ministries

321 Williams Ave, Picayune, MS 39466-3946

Phone: (601) 799-3593

Offers assistance in a variety of ways, including purchasing approved medications and clothing and providing gas vouchers to drive to medical appointments, home-delivered meal program for seniors and disabled individuals, and food bank for families in need of support.

Community of Christians Helping Youth

120 Street A, Suite C, Picayune, MS 39466

Phone: (601) 569-6567

Email: www.cchy@att.net

Website: <http://www.cchypicayune.org/>

CCHY provides many programs, including but not limited to: Parenting Classes, Vocational Training, Diploma Program, Youth Homework Assistance, STEM-based Lesson Plans, Performing Arts, Sewing, Nutrition, Fitness, Environmental Education, Reading, Counseling, Hands-on Projects, and Field Trips

Manna Ministries

120 Street A, Picayune, MS 39466

Phone: 601-799-2121

Email: dixie@mannaministry.net; Website: <http://mannaministry.net/>

Manna Ministries provides and restores health and support to those in need without regard to geographical areas. Everyday families struggle to make ends meet and suffer from lack of basic human needs such as food, clothing, shelter, and healthcare.

MSU Extension Services

417 Hwy 11 N., Poplarville, Mississippi 39470

Phone: 601-403-2280; Fax: 601-795-0651

Website: <http://extension.msstate.edu/msu-extension-pearl-river-county>

Local agents and staff receive training in a wide range of subject matter and are ready to share their enthusiasm about agriculture, natural resources, community development, family and consumer sciences, and 4-H. If you need answers to your pressing questions, call the Pearl River County extension office. If they don't know the answer, they'll find someone who does!

Pearl River Valley Opportunity

204 Julia Street, Poplarville, MS 39470

917 Goodyear Blvd, Picayune, MS 39466

Phone: (601) 403-2206

Phone: (601) 749-7729

Website: <http://prvohs.org/>

- *Family Services:* PRVO helps families meet their basic needs, obtain family stability, and improve their quality of life. We believe in addressing the entire family and supporting them in taking an active role in every phase of their child's development as well.
- *Children Services:* Our services include child health, education, child safety, nutrition, family and community services, as well as mental health and disabilities.
- *Senior Services:* PRVO provides programs and services such as prescription assistance and

meal plans which helps improve quality of life for seniors

- **Business Services:** PRVO assists with financing business, economic development activities, and socially and economically disadvantaged minorities and women owned businesses, to create or retain jobs in disadvantaged and remote communities.

Pregnancy Support Services

1101 Goodyear Boulevard, Picayune, MS 39466

Phone: 601-799-2668

Website: <http://savalifems.org/>

Services include: Pregnancy Tests, Confidential Peer Counseling, Maternity and Infant Support Materials, Limited Ultrasound, Childbirth Classes, Community Resource Referrals, Earn While You Learn

Saint Charles Borromeo Catholic Church

1000 Goodyear Boulevard, Picayune, MS 39466

Phone: (601) 798-4779

Website: <http://www.scborromeo.org/>

Food Pantry: Monday, Tuesday, Thursday & Friday 10:00am-11:30am

FAMILY SUPPORT SERVICES : REGIONAL AGENCIES

American Red Cross of Southeast Mississippi

Primary Office: 612 E. Pass Road, Gulfport, MS 39507.

Phone: 228-896-4511

Website: <http://www.redcross.org/>

Services include Be Red Cross Ready (Emergency Preparedness); Blood Donation Services; Disaster Services (hurricanes, floods, tornadoes, heat waves, hazardous materials spills and other natural and man-made disasters); Health and Safety Services (First Aid and CPR training to swimming and lifeguarding, and babysitter training); International Services, Service to the Armed Forces (training and support).



Salvation Army

2019 22nd Street, Gulfport, MS 39501

Phone: (228) 374-8301

Website: <http://salvationarmyalm.org/msgulfcoast/locations/>

The Salvation Army MS Gulf Coast provides over a million services every year to residents in South Mississippi. Services include food assistance, utility assistance, shower and laundry program, community fellowship, life skills classes, vital record assistance, clothing assistance,



referral assistance, disaster services, and Christmas assistance.

United Way of South Mississippi

Knight Nonprofit Center
 11975 Seaway Road, Suite B170, Gulfport, MS 39503
 Phone: (228) 896-2213
 Website: <http://www.unitedwaysm.org/>



Targeted priority areas include education, income (financial stability), and health. These are the building blocks of a good life. We also focus on building a strong foundation of safety net services, ensuring food, clothing and shelter to families in South Mississippi.

FINANCIAL SERVICES

Bancorp South

201 W Main Ave., Lumberton, MS 39455
 Phone: (601) 796-4212; Fax: (601) 796-5612
 Website: www.bancorpsouth.com



BankPlus - Main Office

951 Memorial Blvd,
 Picayune, MS 39466
 Phone: (601) 798-8300
 Website: www.bankplus.net

BankPlus

115 Williams Ave,
 Picayune, MS 39466
 Phone: (601) 749-3077

BankPlus

105 S Main St,
 Poplarville, MS 39470
 Phone: (601) 795-2271

Firemen's Federal Credit Union

1620 Goodyear Blvd, Picayune, MS 39466
 Phone: (504) 889-9090
 Website: www.noffcu.org

The First- A National Banking Association

1506 Mississippi 43, Picayune, MS 39466
 Phone: (601) 798-2987; Fax (601) 798-3285
 Website: www.thefirstbank.com/

First National Bank – Main Branch

121 E Canal St,
 Picayune MS 39466
 Phone: (601) 749-3200

First National Bank - West

208 W Canal St,
 Picayune, MS 39466
 Phone: (601) 749-3273

First National Bank - South

801 Memorial Blvd,
 Picayune, MS 39466
 Phone: (601) 749-3275

First National -North

721 Cooper Rd,
 Picayune, MS 39466
 Phone: (601) 749-3272

First National Bank


1720 S Main St,
 Poplarville, MS 39470
 Phone: (601) 795-0250

Website: www.fnbop.com/

First Southern Bank

1321 MS-43, Picayune, MS 39466
 Phone: (601) 798-6438
 Website: www.fsb-ms.com

<p>Hancock Bank - Northside 2400 Hwy 11 N, Picayune, MS 39466 Phone: (601) 799-0921 Website: www.hancockwhitney.com</p>	<p>Hancock Bank - Southside 229 Memorial Blvd, Picayune, MS 39466 Phone: (601) 799-0939</p>	<p>Hancock Bank - Poplarville 602 S Main St, Poplarville, MS 39470 Phone: (601) 795-4533</p>
<p>Keesler Federal Credit Union - Picayune 2270 Mississippi 43 S, Picayune, MS 39466 Phone: (228) 385-5500 Website: www.kfcu.org</p>	<p>Regions Bank 407, US-11, Picayune, MS 39466 Phone: (800) 734-4667 Website: www.regions.com/</p>	

<p>FINANCIAL TRAINING</p>	
<p>Bank Plus - Picayune 951 Memorial Blvd, Picayune, MS 39466; Phone: 601-798-8300 Register at: https://www.bankplus.net/Personal/CreditPlus/CreditPlus/?terms=training</p> <p>Offers a financial literacy training that provides residents with important information to make wiser financial decisions. Classes are held for the financial education of individuals 18 years and older. Only those individuals registered will be allowed to enter the training room.</p> <p>Manna Ministries 120 Street A, Picayune, MS 39466 Phone: 601-799-2121 Email: dixie@mannaministry.net ; Website: http://mannaministry.net/</p> <p>Our resources and information are designed to inspire and assist you as you begin to make necessary changes in your financial decisions. No matter what financial issues you are struggling with, remember you are not alone. Our assistance and information include:</p> <ul style="list-style-type: none"> * How to start & maintain a budget * Pitfalls of predatory lending & how to avoid * How to save for emergencies * How to build or repair your credit * How to avoid delinquency & foreclosure on your home * Savings & investing * How to avoid identity thief and fraud 	

MSU Extension Services

417 Hwy 11 N., Poplarville , Mississippi 39470

Phone: 601-403-2280; Fax: 601-795-0651

Website: <http://extension.msstate.edu/msu-extension-pearl-river-county>

Our team of consumer educators provides resources and programs to improve the financial well-being of individuals and families in Mississippi. We work with local and state partners to meet the consumer education needs of citizens from youth through the senior adult years.

MEDICAL: HOSPITALS

Highland Community Hospital

130 Highland Pkwy, Picayune, MS 39466

Phone: (601) 358-9400

Website: <http://www.forresthealth.org/our-locations/highland-community-hospital/>



The 60-bed facility and affiliated clinics provide access to a broad range of quality services, supporting the community and enhancing the level of care for the residents of Picayune and the surrounding areas. Highland Community Hospital offers the following services:

- Women & Children’s Services
 - Mammography (FDA-approved mammography system for the screening and diagnosis of breast cancer)
 - Pediatrics (inpatient pediatric services)
 - Obstetrics (labor and delivery suites and postpartum rooms)
- Cardiac Services (Cardiology Services, Diagnostic Services, monitored exercise)
- Emergency (provides efficient and effective care for every type of illness, injury and trauma)
- Geriatric Psychiatric Unit The Grove (designed to address the complex needs of older patients)
- Hospitalist Program (a physician acts as a primary physician for patients who do not have a local primary care physician)
- Intensive Care Unit (designed and equipped for the intensive treatment of critically-ill patients)
- Laboratory (offers services 24 hours a day, seven days a week)
- MRI (accredited magnetic resonance imaging service)
- Physical Therapy (perform comprehensive assessments provide a treatment plan)
- Respiratory Therapy (care for patients with acute and chronic breathing disorders)
- Radiology / Imaging (ultrasound, nuclear medicine and the digital CAT scanner)
- Surgical (surgical care in an emergency, including inpatient and outpatient procedures)

Pearl River County Hospital & Nursing Home

305 W Moody St, Poplarville, Mississippi 39470

Phone: 601-795-4543

Email: tommie.staten@prc-med.com

Website: www.prc-med.com

Pearl River County Hospital has a 24-hour Emergency Room which provides critical care and life-saving intervention for the under-served rural population of Pearl River, Hancock, and surrounding counties, and our 22 inpatient beds provide professional care for our Acute Care and Swing Bed patients. Ancillary services include Radiological Imaging, Laboratory, Respiratory, as well as Physical Therapy, Occupational Therapy, and Speech Therapy. Other services include our Prime Care Family Health clinic, which offers outpatient medical, wellness, and mental health services, as well as our Intensive Outpatient Program, which offers specialized services for the treatment of depression, anxiety, and other behavioral disturbances for our senior adult and geriatric patients of our community.

MEDICAL: PEDIATRIC / FAMILY CLINICS**Children's International Medical Group**

(Provider: Christopher M. Fletcher, APRN)

801 Williams Ave, Picayune, MS 39466

Phone: (601) 798-5558; Fax: (844) 899-5210

Website: <http://childrensinternationalmedicalgroup.com/>

Hattiesburg Clinic Immediate Care – Carriere

6941 Hwy 11, Ste. A Carriere, MS 39426

Phone: 601-749-3776

Website: <http://www.hattiesburgclinic.com/department/immediate-care-carriere>

Hattiesburg Clinic: Poplarville Clinic

(Providers: Wayne E. Grayson, MD; Angela C. Jones, MD; Alicia L. Stevens, MD; Donna G. Cobb, CNP; Christina L. Meador, CNP)

Address: 1407 S Main St, Poplarville, MS 39470

Phone:(601) 795-0659

Website: <http://www.hattiesburgclinic.com/department/the-poplarville-clinic>

Highland Pediatrics Clinic

(Provider: Rodriguez J Abraham MD)

146 Highland Pkwy, Picayune, MS 39466

(601) 798-5227

Website: <http://www.forresthealth.org/our-locations/locations-profile/?id=189>



Pearl River Family Clinic

(Provider: Dr. Cornel Jeansonne)
302 US-11 S, Poplarville, MS 39470
Phone: (601) 403-8284

Picayune Family Care Center

(Providers: Delora Denney, MD; James Denney, FNP)
12 Medical Plaza Blvd # B, Picayune, MS 39466
Phone: (601) 798-5281
Facebook Page: https://www.facebook.com/picayunefamilycareclinic/about/?ref=page_internal

Picayune Pediatrics

(Provider: Betty Jo Alexander, CNP)
517 5th Ave, Picayune, MS 39466
Phone: 601-799-5865; Fax: (601) 749-2328
Facebook Page:
<https://www.facebook.com/picayunepediatrics/>

Picayune Urgent Care

(Providers: Tammy Vincent, NP; Frederick Joseph Deben, NP)
Address: 422 Memorial Blvd, Picayune, MS 39466
Phone: (601) 798-2151

Poplarville Family Medical Clinic

(Provider: Grace Ford, FNP-BC)
1222 S Main St, Poplarville, MS 39470
Phone: (601) 795-9320

Riser Medical Associates

(Providers: April Ross, MD; Mary Hess, FNP; Carla Penton, FNP; Albert Sanders, NPC; Cari McDonald, FNP; Ajay Acharya M.D.)
2274 Highway 43 South Picayune, Mississippi 39466
Phone: (601) 798-5798
Fax: (601) 798-1058
Website: <http://risermedical.com/>



MEDICAL: PEDIATRIC / FAMILY DENTISTRY

DN Orthodontics

(Providers: Dr. Jack Devereux; Dr. Brian Duvernay; Dr. Ashley Lestrade)

6420 Highway 11 North, Suite C, Carriere, MS 39426

Phone: (601) 799-3120; Fax: (601) 251-0006

Email: picayune@dn4smiles.com

Website: <https://smiledoctors.com/>



Futrell Family Dentistry

(Provider: David E. Futrell, DDS)

814 Highway 43 N, Picayune, MS 39466

Phone: (601) 798-4221

Email: futrelldentist@hotmail.com

Griffing, Ward G DDS

801 Sixth Ave, Picayune, MS 39466

Phone number (601) 798-5380

Facebook Page: <https://www.facebook.com/pages/Griffing-Ward-G-DDS/137850779595639>

Picayune General Dentistry Inc

(Provider: Horace "Trey" Combs III, DMD)

500 Goodyear Blvd, Picayune, MS 39466

Phone: (601) 798-0500

Website: <https://treycombsdmd.com/>

Patrick Eck, DDS

1127 Hwy 43 N, Picayune, MS 39466

Phone: (601) 798-5443

Facebook Page: <https://www.facebook.com/pages/Dr-Patrick-Eck-DDS/166003383495177?rf=853477801409642>

Penley Family Dentistry

(Provider: Adrienne Varnado Penley, DMD)

6480 Hwy 11 N, Carriere, MS 39426

Phone: (601) 749-9330; Website: <http://www.penleyfamilydentistry.com/>

Picayune Dental Clinic

(Providers: Hal M. Schrock, DDS; Lyndsay Marks, DMD)

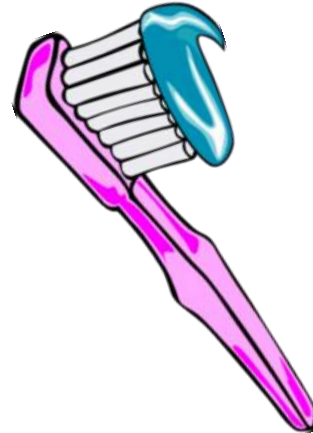
200 Norwood St, Picayune, MS 39466

Phone: (601) 798-8207

Website: <https://www.picayunedentalclinic.com/>

Picayune Smiles

(Provider: Joseph Daho, D.D.S.)
 100 Haydon Oaks Dr, Picayune, MS 39466
 Phone: (601) 798-1135
 Email: picayunesmiles@gmail.com
 Website: <https://www.picayune-smiles.com/>

**Poplarville Dental Clinic**

(Provider: Jason Estep, DMD)
 1718 S Main St, Poplarville, MS 39470
 Phone: (601) 795-8024
 Website: <http://poplarvilledentalclinic.com>

MEDICAL: VISION SERVICES**Advanced Eyecare, LLC**

(Provider: Kraig Stasney, O.D.)
 5 Alex Pl, Picayune, MS 39466
 Phone: (601) 799-0707
 Website: <http://www.idoc.me/>

Eye Care for Picayune

(Provider: Dr. David P. Schwarz)
 Address: 3300 Hwy 11 N a, Picayune, MS 39466
 Phone:(601) 798-3164

Hattiesburg Clinic – Picayune

(Providers: Christopher L. Cooley, MD; Curtis J. Shaffer, OD; Casey C. Wells, CNP)
 Picayune Family Practice Clinic
 128 Highland Pkwy. Suite 200, Picayune, MS
 Phone: 601-358-9630
 Website:
<https://www.hattiesburgclinic.com/department/picayune-family-practice-clinic/>

Hattiesburg Clinic – Poplarville

(Providers: Christopher L. Cooley, MD; Curtis J. Shaffer, OD; Casey C. Wells, CNP)
 1407 South Main Street, Poplarville, MS 39470
 Phone: 601-795-0659
 Website:
<https://www.hattiesburgclinic.com/department/poplarville-clinic/>

Poplarville Eye Clinic

(Provider: Dr. Bethany G. Harrington, OD)
 Address: 1249 S Main St C, Poplarville, MS
 Phone: (601) 795-0137

Southern Eye Center

(Providers: Abumere Akinwale, MD; Joseph Childs, MD; Cameron S. Griffith, MD; Jaime Jiménez, MD; Lynn B. McMahan, MD; Kiper C. Nelson, MD; Stanley Saulny, MD; Amy Grubbs, NP-C)
 1 Sycamore Rd, Carriere, MS 39426
 Phone: (601) 251-3937
 Website: <https://southerneyecenter.com/>

Walmart Vision Center

(Provider: Johneen Gilich, OD)
 235 Frontage Rd, Picayune, MS 39466
 Phone:(601) 799-5064
 Website: <https://www.walmart.com/>



<p>Picayune Eye Clinic (Providers: Lori L. Blackmer, OD; Erin Anderson, OD) Address: 908 6th Ave, Picayune, MS 39466 Phone: (601) 798-4182</p>	
---	--

MENTAL HEALTH / DRUG / ALCOHOL TREATMENT

Alcoholics Anonymous (Correctional Institution & Treatment Facility Meetings)
SOUTH MISSISSIPPI INTERGROUP ASSOCIATION, INC.
District 10 Meeting: Hancock & Pearl River Counties
Each Tuesday - Kiln Community Center Hwy 603 & 43, Kiln, MS @ 5:30 P.M
24-Hour Help Line: (228) 575-9225

Bonano & Gouguet
703 W Canal St, Picayune, MS 39466
Phone: (601) 749-9477
Website: [HTTPS://BONANO-GOUGUET.BUSINESS.SITE/](https://BONANO-GOUGUET.BUSINESS.SITE/)

SERVICES INCLUDE: Marriage Counseling, Mental Health Counseling, Community Health, Teen Counseling Programs, Substance Abuse Counseling, Family Counseling, and Couples Counseling

Bruno Counseling & Consulting Services, LLC
110 W Erlanger St, Poplarville, MS 39470
Phone:(601) 746-5125
Website: <http://www.brunocounselingandconsulting.com/>

SERVICES INCLUDE: Individual Therapy, Group Therapy, Family Therapy, Couples, & Child and Adolescent Therapy

Gulf Coast Mental Health
211 Hwy 11S, Picayune, MS
Phone: 601-798-7001; Fax 601-799-4481
Website: <http://www.gcmhc.com/>

SERVICES INCLUDE: Individual outpatient therapy, Medication management, Mental Health Care

Jacob’s Well Ministries (Addiction Recovery Center)
45 Buford Lane, Poplarville MS 39470
Phone: (601) 916-2107
Website: <https://jwgirl4life.com/>

Jacob’s Well Recovery Center helps women addicted to drugs and alcohol break those habits and rebuild their lives.

Pine Grove Outreach

6482 B US HWY 11 North, Carriere , MS 39426
(601) 799-0849 or toll free 1-877-303-6829

Website: <http://www.pinegrovetreatment.com/>

Free confidential assessment for substance abuse, depression grief, anxiety, marital/family therapy, child and adolescent therapy, and stress management.

Oasis Community Development Center

502 Jarrell Street, Picayune, MS 39466
Phone: 601-799-1744

Pregnancy Support Services

1101 Goodyear Blvd, Picayune, MS 39466
Phone: (601) 799-2668

Website: <http://savalifems.org/>

SERVICES INCLUDE: Pregnancy Tests; Confidential Peer Counseling; Maternity and Infant Support Materials; Limited Ultrasound; Childbirth Classes; Community Resource Referrals; Earn While You Learn

Teen Challenge of Mississippi

5 Buford Lane Poplarville, MS 39470
Phone: 601.795.8063

Website: <http://www.teenchallengems.org/>

Teen Challenge of Mississippi, Inc. is a non-profit Christian organization whose mission is to help people with life-controlling problems become mentally sound, socially adjusted, physically well, and spiritually alive through the power of Jesus Christ. The Teen Challenge approach provides drug and addiction rehabilitation that considers the whole man: physical, psychological and spiritual. The Poplarville Center is for adult females 18 years and older.



**THE ROAD TO
RECOVERY**

RECREATIONAL ACTIVITIES

City of Picayune: Parks & Recreation

1400 U.S. 11, Picayune, MS 39466

Phone: (601) 799-0602

Website: <http://www.picayune.ms.us/departments/parks-recreation/>

- Crosby Commons, Goodyear Blvd.
- Friendship Park – 1701 South Haugh
- Jack Reed Park – 200 Goodyear Blvd
- Mildred Mitchell Park - Daniels Street and Hwy. 43 N
- Snyder Park – 110 South Beech
- Ben Taylor Park – 200 Palestine Rd
- J.P. Johnson Park – 415 Rosa St



City of Poplarville:

200 MS-26, Poplarville, MS 39470

Phone: (601) 795-8161

- Poplarville City Park & Walking Track
Hwy 26; Poplarville, MS



Crosby Arboretum

370 Ridge Road Picayune, MS 39466

Phone: (601) 799-2311; Fax: (601) 799-2372

Website: <http://crosbyarboretum.msstate.edu/>

The Crosby Arboretum is dedicated to educating the public about their environment. This mission is carried out by preserving, protecting, and displaying plants native to the Pearl River Drainage Basin ecosystem, providing environmental and botanical research opportunities, and offering cultural, scientific, and recreational programs.



Greater Picayune Arts Council

P.O. Box 1512, Picayune, MS 39466

Email: artscouncilpicayune@yahoo.com

Greater Picayune Arts Council (GPAC) advocates for the city and region's cultural sector, encourages participation in and equitable access to cultural programs, and promotes integration of diverse cultural amenities into community development. In addition, GPAC will work to promote the arts in regional education systems.

Infinity Science Center

One Discovery Circle, Pearlington, MS 39572

I-10 Exit 2 on the Mississippi Gulf Coast

Phone: (228) 533-9025

Website: <http://www.visitinfinity.com/>



Visitors to the 35,000-square-foot science center enter a world where discovery truly is endless. The fun begins with **outdoor exhibits** such as the colossal F-1 rocket engine, a tsunami buoy, and a U.S. Navy riverine training boat. Just inside the front entrance in the **Science Express Gallery** area, check out our Big Blue Blocks as you design and build your own inventions, or learn about more than 200 species of carnivorous plants. Take a mesmerizing journey in our Immersion Theater with **Science on a Sphere** where you can explore the tracks of hurricanes, the surface of the sun or Mars and much more. In our **Earth and Space Galleries**, you'll find simulators and artifacts, video theaters, Smithsonian-loaned artifacts, and a life-sized, walk-through mockup of the International Space Station's Destiny module.

Intermodal Tourist Center & Lower Pearl River Valley Transportation Museum

200 Hwy 11 South, Picayune MS 39466

Phone: (601) 799-3070

Website:

<http://www.lowerpearlrivervalleytransportationmuseum.com/>



Located in the heart of Historic Downtown Picayune, aka train depot is served by the Amtrak Crescent passenger train twice daily. Inside the Tourist Center is a transportation museum compiled by the Lower Pearl River Valley Volunteers. Their efforts will provide future generations a sense of history and education in the way Picayune/Pearl River County early settlers traveled and worked through the years from horseback, steam boat and space travel.

Paint Your Own Studio

168 Richardson Rd Picayune, MS 39466

Phone: (601) 329-9211



The craftsmen at Paint Your Own Studio make hand-thrown, fired, and cast pottery. We use our hands, wheels, molds, and ovens to create earthenware, stoneware, and porcelain pottery with various glazes. Special orders are available upon request. Call to ask for custom pottery today.

Pearl River County Welcome Center

500 I-59 N, Picayune, MS 39466

Phone: 601.798.8184

Fax: 601.798.8175

Email: pearl@mississippi.org

Each is beautifully decorated with fine antique furnishings from the period. Neatly manicured grounds feature picnic tables and grills, telephones, RV waste disposal facilities, 24-hour security, restrooms and weather information. Motor coach parking is available, as well as complimentary refreshments. The Welcome Center staff stands ready to answer any questions you have, and can even help with lodging reservations.



Picayune Acadiana Cinema 4

997 Cooper Road, Picayune, MS, 39466

Movie Line: (601) 749-8345

Website:

<https://www.acadianacinemas.com/location/4798/Picayune-Cinema-4-Showtimes>

Offers: All Stadium Seating: All Digital Projection: All Digital Stereo Sound; 2 Theaters with VIP Style Lounge Chairs



ADMISSION & PRICES:

Evenings: Adult \$9.00; Child/Senior \$7.00

Matinees (before 6:00 p.m.): All seats \$6.50

3D Charge:

add \$2.00

Picayune Main Street

200 Highway 11, South, Picayune, MS

Phone: 601-799-3070

Fax: 601-749-3319

Website:

<https://picayunemainstreet.com/>

- Picayune Street Festivals- includes Classic Car Show, food vendors, and over 300 vendors displaying furniture, custom framing, glassware, plants, antiques, collectibles, pottery, monogramming, jewelry, painting, woodwork, metal work, and numerous other art and craft displays.
- Rockin & Grillin - Showcase for the BBQ Joints of Mississippi



- Shop by Candlelight & Christmas on the Rails

The Teddy Bear House Museum

1299 S. Haugh Ave., Picayune, MS 39466

Phone: (601) 778-BEAR

Website: <http://mississippimuseums.org/teddy-bear-house-museum/>

Hours: Tuesday-Saturday, 10 a.m. – 5 p.m.

Sunday, 12 noon – 5 p.m.

Email: info@thetteddybearhouse.com



The Teddy Bear House Museum is a magical tour through fantasy and history about Teddy Roosevelt with more than 16,000 bear related items. Come to The Teddy Bear House Museum and bring back the wonder of childhood. Step in to experience the magic that fills each room, on a tour you are not going to forget. Experience the house and meet over 12,000 new friends. This is one destination that the whole family can enjoy adults and children alike.

YOUTH SUPPORT PROGRAMS

Boy Scouts of America

Pine Burr Area Council (services Pearl River County)

1318 Hardy St, Hattiesburg, MS 39401

Phone: (601) 582-2326

[HTTP://WWW.PINEBURRSCOUTS.ORG/](http://www.pineburrscoouts.org/)

The Boy Scouts of America is one of the nation's largest and most prominent values-based youth development organizations. The BSA provides a program for young people that builds character, trains them in the responsibilities of participating citizenship, and develops personal fitness.

For over a century, the BSA has helped build the future leaders of this country by combining educational activities and lifelong values with fun.



Prepared. For Life.™

Girl Scouts Greater Mississippi – Headquarters / Service Center

1471 West County Line Road, Jackson, MS 39213

Phone: 601-366-0607 ; Fax: 601-366-0664

Website: <http://gsgms.org/index.php>



Girl Scouts®

Community of Christians Helping Youth (CCHY)

120 Street A, Suite C, Picayune, MS 39466

Phone: (601) 569-6567; cchy@att.net

CCHY provides many programs for the youth, including but not limited to: Homework Assistance; STEM-based Lesson Plans; Performing Arts; Sewing; Nutrition; Fitness; Environmental Education; Bible Study; Reading; Counseling; Hands-on Projects; Field Trips

Helping girls discover their strengths, passions, and talents. Today we continue the Girl Scout mission of building girls of courage, confidence, and character who make the world a better place. We're the preeminent leadership development organization for girls. And with programs for girls from coast to coast and across the globe, Girl Scouts offers every girl a chance to do something amazing.



Pearl River County 4-H

401 W Lamar St, Poplarville, MS 39470

Phone: (601) 403-2280

Website: [HTTPS://EXTENSION.MSSTATE.EDU/MSU-EXTENSION-PEARL-RIVER-COUNTY](https://extension.msstate.edu/msu-extension-pearl-river-county)



For 5–18 years olds who want to learn by doing, like to receive recognition for work well done, want to learn skills that can help in future careers, or wish to develop leadership skills.

Picayune on Stage Theater Group

208 Virginia St., Picayune, MS

Phone: (601) 749-5551

Email: poscalendar@gmail.com

Picayune On Stage was founded in 1980 with the purpose of presenting live performances of the highest quality. POS also offers an opportunity for theatrical education and enrichment for the youth of all ages.



Picayune Youth Athletic Association (PYAA)

P.O. Box 1433, Picayune, MS 39466

Phone: 601-273-1871

Website: www.pyaabaseball.net

Facebook Page:

<https://www.facebook.com/pyaabaseball/>

Picayune youth ages 4 and up softball, baseball, soccer, and football teams registration.



Poplarville Athletic Association

P.O. Box 822, Poplarville, MS 39470

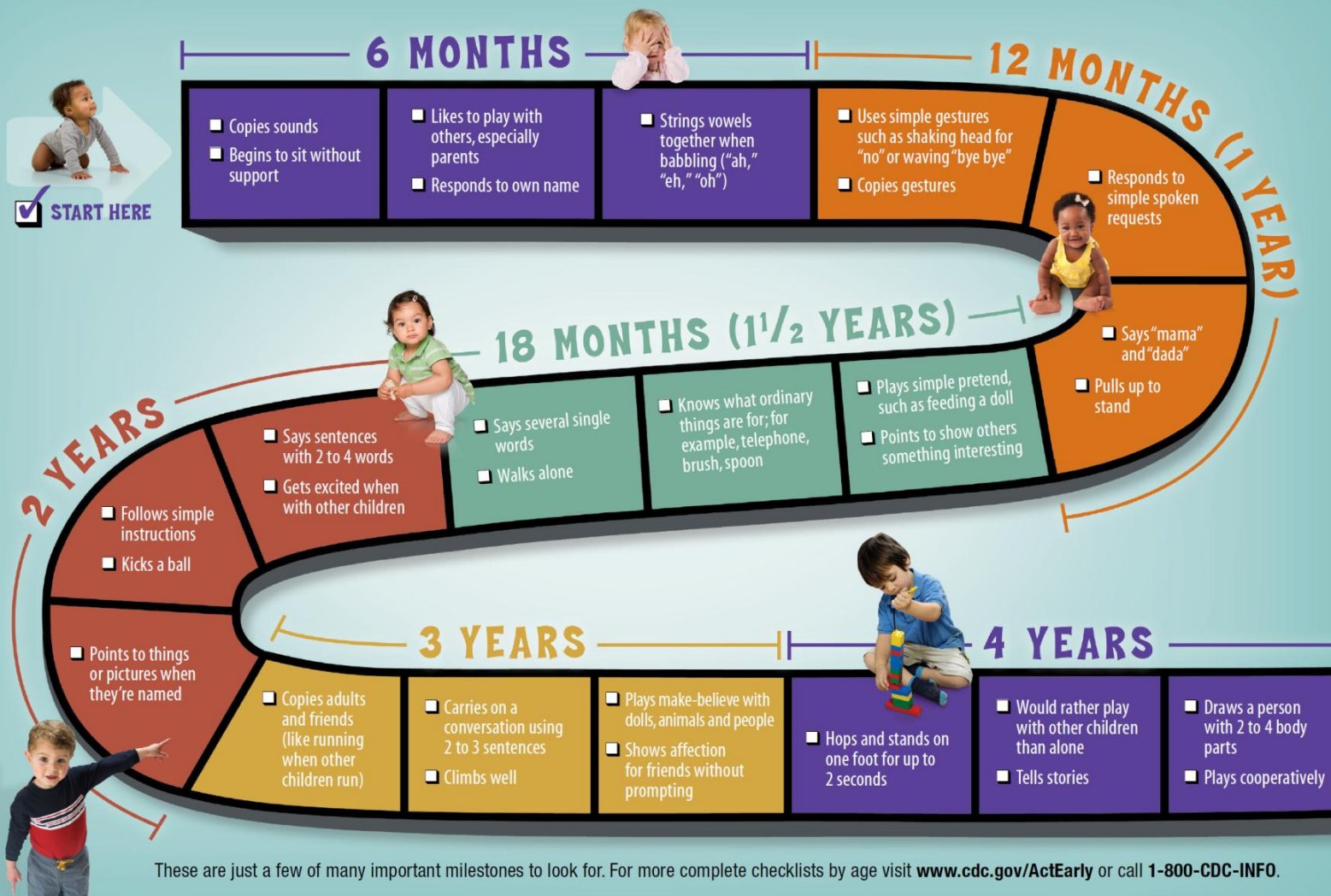
Phone: (601) 463-0688

Website: <http://www.leaguelineup.com/welcome.asp?url=poplarville>

Poplarville youth ages 4 and up softball, baseball, soccer, and football teams registration.

Your Child's Early Development is a Journey

Check off the milestones your child has reached and share your child's progress with the doctor at every visit.



For more information about the
Southern Pearl River County
Excel By 5 Coalition, visit us at:

[http://www.excelby5.com/
southern-pearl-river-county](http://www.excelby5.com/southern-pearl-river-county)



CERTIFIED
EARLY CHILDHOOD COMMUNITY

SOUTHERN PEARL RIVER COUNTY